

# PRIMARY IMPACT CRUSHERS

## SUPER BREAKER – SINGLE ROTOR

## COMPOUND CRUSHER – DOUBLE ROTOR

### OUTLINE

We began manufacturing its patented Impeller Breaker in 1953 and supplied over 10,000 units.

**SUPER BREAKER** is the impact crusher with a single rotor specially designed for the primary crusher in cement plant.

**COMPOUND CRUSHER** has double rotors and this single machine is capable of both primary and secondary crushing.

**EARTHTECHNICA IMPACT CRUSHERS** will help your company increase productivity and profit.

### FEATURES

#### Robust and Reliable Design

Simple and tough design, rotor with the big force of inertia, can withstand the heavy-duty use and reliable.

#### Cost-effective

Installing one IMPACT CRUSHER can make the crushing system simple. Which can reduce the total power consumption and handling costs. Striking blades and other important wear parts are made of highly wear resistant and tough steel castings. Which will give you a great many of economical advantages specially in crushing the low abrasive material.

#### Cubical Product

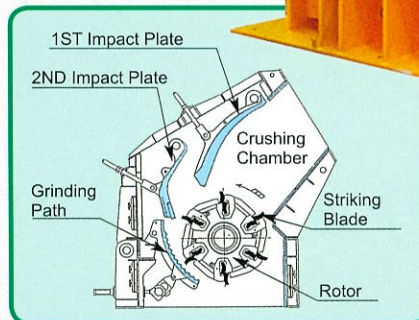
Impact crushing and grinding can produce a highly cubical product.

#### Easy Maintenance

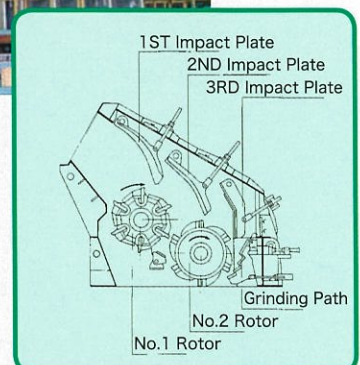
For easy maintenance and adjusting, IMPACT CRUSHER is equipped with hydraulic system has inspection doors on all faces.



**SUPER BREAKER**



**COMPOUND CRUSHER**



**EARTHTECHNICA**

EARTHTECHNICA has inherited all of the crusher business formerly handled by Kawasaki Heavy Industries and Kobe Steel.



## SPECIFICATIONS

### SUPER BREAKER (Single Rotor)

Model	Feed Opening(mm)	Capacity (mt/h)	Motor (kW)	Dimensions (mm)		
	Length x Width			H	L	W
KSB-1615	1,150 x 1,520	350-500	150-400	3,900	4,100	3,100
KSB-1622	1,150 x 2,270	500-700	400-700	3,900	4,100	4,050
KSB-1822	1,400 x 2,270	650-1,000	600-1,200	4,900	4,800	4,400
KSB-2022	1,600 x 2,270	800-1,250	800-1,400	5,200	5,250	4,600
KSB-2030	1,600 x 3,020	1,100-1,650	1,000-2,000	5,200	5,250	5,900
KSB-2237	1,800 x 3,720	1,650-2,400	1,500-2,400	5,350	5,600	6,800

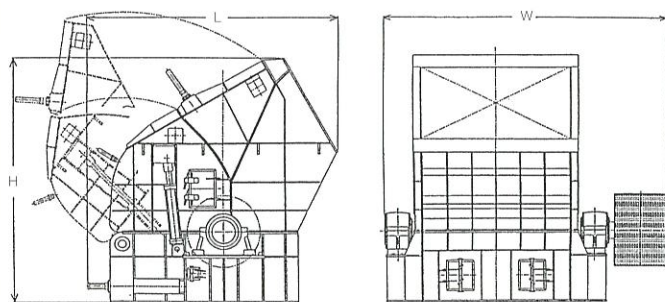
NOTES Capacity and horsepower given above are approximates as substantial variation occur according to object material, feeding and crushing sizes, and rotor peripheral velocity.

### COMPOUND CRUSHER (Double Rotor)

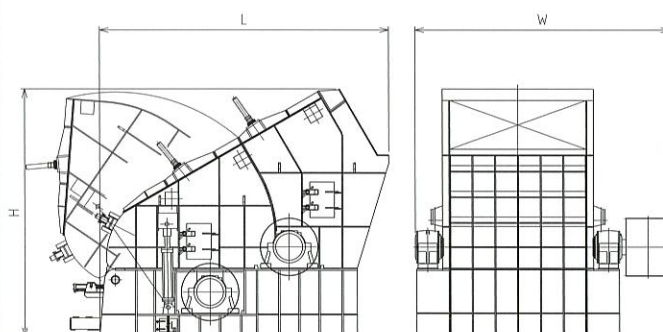
Model	Feed Opening(mm)	Capacity (mt/h)	Motor (kW)	Dimensions (mm)		
	Length x Width			H	L	W
AP-6C	1,400 x 2,250	650-900	900/1,000	5,200	6,200	4,400
AP-7C	1,600 x 2,250	800-1,000	1,200/1,400	6,000	6,700	4,800
AP-7BrC	1,700 x 3,000	1,000-1,500	1,600/1,750	6,000	6,700	5,700
AP-7SC	1,700 x 3,750	1,500-2,000	2,000/2,400	6,400	6,900	7,000

NOTES Capacity and horsepower given above are approximates as substantial variation occur according to object material, feeding and crushing sizes, and rotor peripheral velocity.

SUPER BREAKER



COMPOUND CRUSHER



 **EARTHTECHNICA CO., LTD.**

URL : <http://www.earthtechnica.co.jp/>  
E-mail : [ETCL@earthtechnica.co.jp](mailto:ETCL@earthtechnica.co.jp)

#### Overseas Sales Section

Tel : 81-3-3230-7159 Fax : 81-3-3230-7158  
KUDANFUJI Bldg., 2-4, Kanda-Jimbocho, Chiyoda-ku,  
Tokyo, 101-0051, JAPAN



# HAMMER CRUSHER

## ZIGZAG HAMMER ARRANGEMENT CRUSHER FOR COAL CRUSHING & GRINDING

### OUTLINE

- Fed coal is crushed & ground by the impact of hammer head and shearing effect between hammer head and grinding path.
- Fine particle in the feed is easily escaped through the gap between hammer head. This leads less fines in the product.

### FEATURES

#### Easy Adjustment of Product Size

Product size can be adjusted easily by;

- Changing rotor speed.
- Changing gap setting between hammer and grinding path liner.
- Using always new face of hammer by reversible rotor.

#### High Grinding Capability

Desired product can be obtained because;

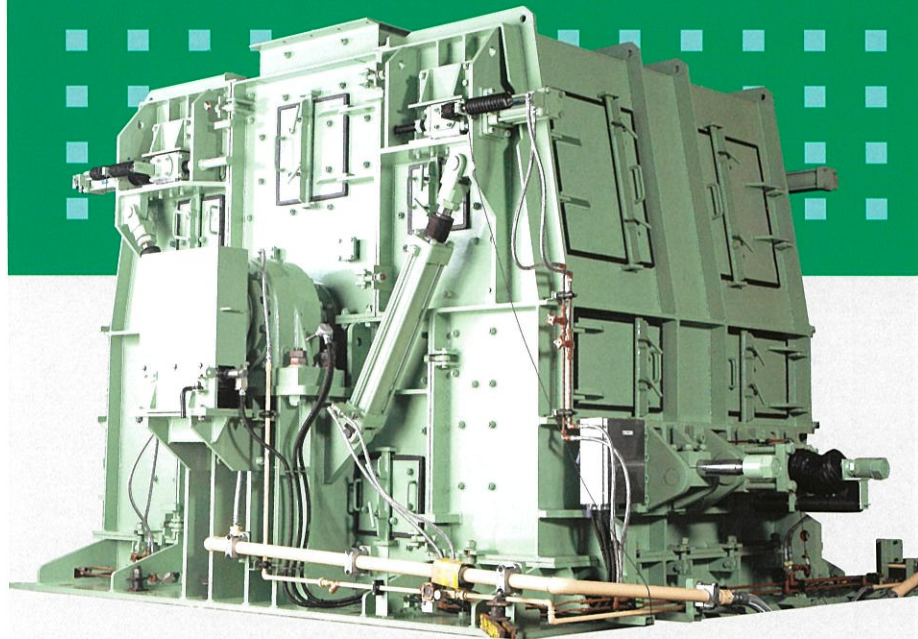
- Coarse particle in the product is reduced by many numbers of grinding path liners.
- Fine particle in the product is reduced by low fan effect of zigzag hammer arrangement.

#### Easy Maintenance

- Multi-sectional welded housing allows easy access to every partition and quick exchange of wear parts.
- Hammers are always operated with sharp edges. And high utilization of hammer head with continuous operation is achieved by reversible rotation.
- No cleaning in the grinding chamber is required because hammer head with zigzag hammer arrangement cleans the grinding chamber automatically.

#### Stable Operation

Low fan effect of zigzag hammer arrangement achieves stable operation.



**ZIGZAG HAMMER ARRANGEMENT** achieves

- Low noise
- Low vibration
- Low de-dusting air volume

**EARTHTECHNICA**

EARTHTECHNICA has inherited all of the crusher business formerly handled by Kawasaki Heavy Industries and Kobe Steel.

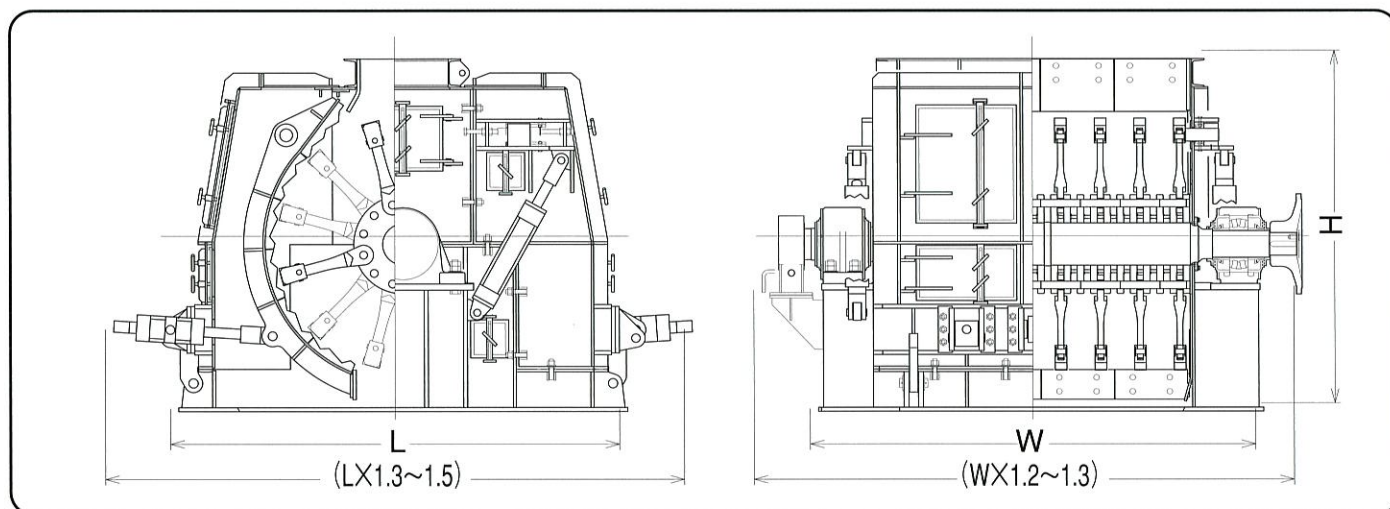


# SPECIFICATIONS

## CAPACITY

Model	Capacity (mt/h)	Feed Opening (mm)	Motor (kW)	Dimensions(mm)				
				L	x	W	x	H
KHC1005	10 ~ 40	319 × 500	37 ~ 110	2,060	×	1,330	×	1,450
KHC1414	30 ~ 220	490 × 1,440	110 ~ 560	2,700	×	2,500	×	2,050
KHC1620	100 ~ 420	550 × 2,065	315 ~ 1,000	2,900	×	3,200	×	2,250
KHC1820	135 ~ 540	600 × 2,066	400 ~ 1,250	3,180	×	3,150	×	2,500
KHC2220	200 ~ 800	730 × 2,116	560 ~ 2,000	3,950	×	3,310	×	3,100
KHC2225	250 ~ 1,000	730 × 2,586	710 ~ 2,500	3,950	×	3,780	×	3,100

**NOTES** The above capacity and motor kW are approximate figures based on the feed material of standard coal with HGI50-60, and may vary according to characteristics and conditions of coal, feed condition and the required product size.



 **EARTHTECHNICA CO., LTD.**

URL : <http://www.earthtechnica.co.jp/>  
E-mail : [ETCL@earthtechnica.co.jp](mailto:ETCL@earthtechnica.co.jp)

### Overseas Sales Section

Tel: 81-3-3230-7159 Fax: 81-3-3230-7158  
KUDANFUJI Bldg., 2-4, Kanda-Jimbocho, Chiyoda-ku,  
Tokyo, 101-0051, JAPAN