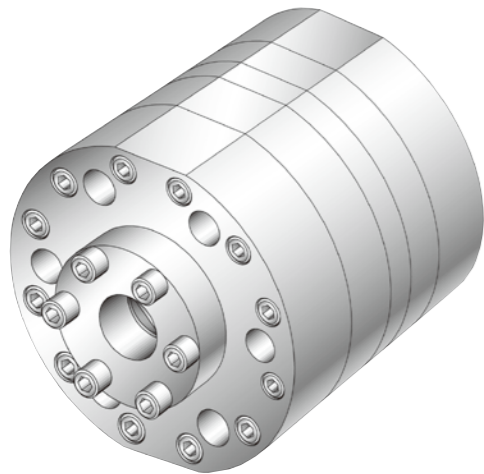


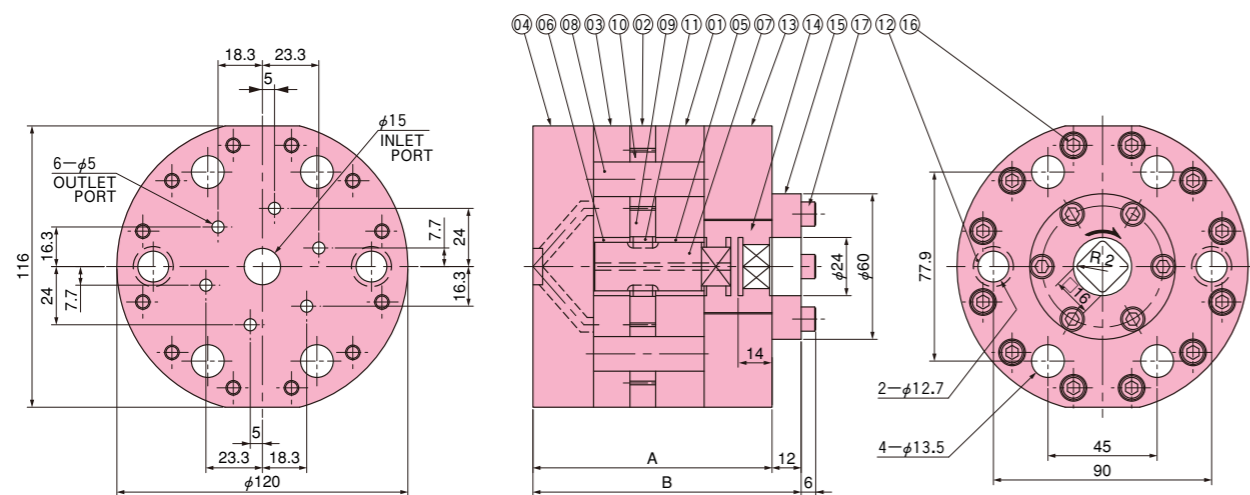
# KH13S SERIES



Main application : Melt spinning  
 Number of ports : Inlet 1 ; Outlet 6  
 Displacement / port : 0.3 ~ 6 cm<sup>3</sup>  
 Inlet pressure : 0.5 MPa~19.6 MPa (5 kgf/cm<sup>2</sup> ~ 200 kgf/cm<sup>2</sup>)  
 Outlet pressure : Max. 49.1 MPa (Max. 500 kgf/cm<sup>2</sup>)  
 Differential pressure : Please refer to table as shown below.  
 Temperature : Max. 350 °C  
 Viscosity : Max. 400 Pa·s (Max. 4,000 Poise)  
 Speed : 10 ~ 40 min<sup>-1</sup>  
 Standard material : High speed tool steel  
 Torque list :

	Bolt size	Torque	
		N·m	kgf·cm
For plates	M8	9.8 ~ 11.8	100 ~ 120
For hub	M6	9.8 ~ 11.8	100 ~ 120
For mounting	M12	68.7 ~ 94.2	700 ~ 960

## STRUCTURE DIMENSIONS (mm)

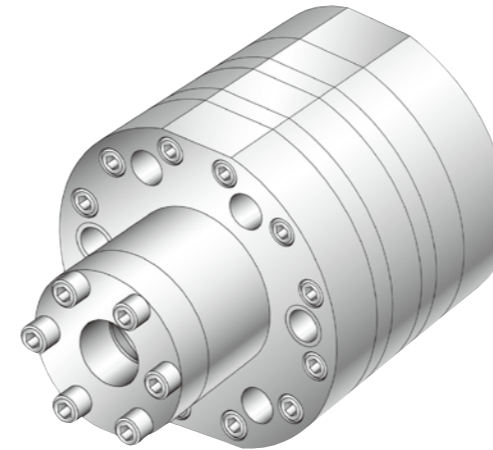


Model	Capacity (cm <sup>3</sup> )	Diff. Press.		A	B	Mass (kg)
		MPa	kgf/cm <sup>2</sup>			
KH13S-0.3	0.3×6	39.2	400	92	104	8.2
KH13S-0.6	0.6×6	39.2	400	95.9	107.9	8.5
KH13S-0.8	0.8×6	39.2	400	91.8	103.8	8.2
KH13S-1.2	1.2×6	34.3	350	93.3	105.3	8.3
KH13S-1.6	1.6×6	34.3	350	95.1	107.1	8.4
KH13S-2	2.0×6	29.4	300	96.8	108.8	8.6
KH13S-2.4	2.4×6	24.5	250	98.6	110.6	8.8
KH13S-3	3.0×6	24.5	250	101.3	113.3	9.0
KH13S-3.5	3.5×6	24.5	250	103.5	115.5	9.2
KH13S-4.8	4.8×6	24.5	250	109.2	121.2	9.7
KH13S-6	6.0×6	24.5	250	107.9	119.9	9.6

### Parts List

Parts No.	Name	Q'ty/set
01	Front plate	1
02	Gear casing	1
03	Back plate	1
04	Wear plate	1
05	Bushing	1
06	Bushing	1
07	Arbor	1
08	Stud	6
09	Driving gear	1
10	Driven gear	6
11	Key	2
12	Dowel	2
13	Hub	1
14	Coupler	1
15	Hub top	1
16	Plate screw	12
17	Hub screw	6

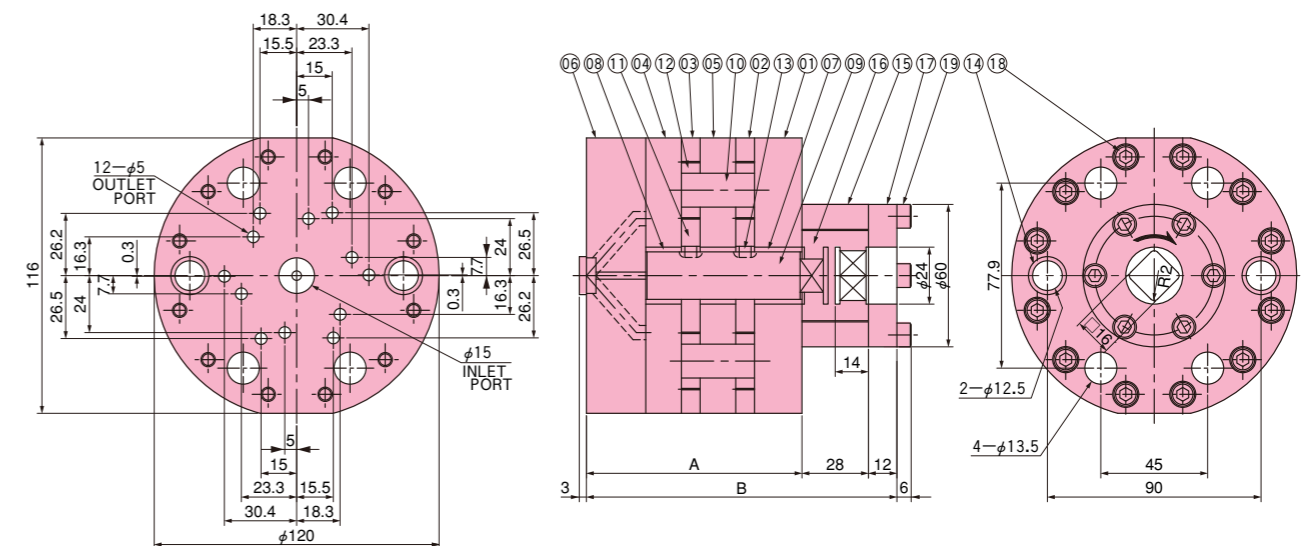
# KH13D SERIES



Main application : Melt & dry spinning  
 Number of ports : Inlet 1 ; Outlet 12  
 Displacement / port : 0.3 ~ 2 cm<sup>3</sup>  
 Inlet pressure : 0.5 MPa~ 4.9 MPa (5 kgf/cm<sup>2</sup> ~ 50 kgf/cm<sup>2</sup>)  
 Outlet pressure : Max. 19.6 MPa (Max. 200 kgf/cm<sup>2</sup>)  
 Differential pressure : Please refer to table as shown below.  
 Temperature : Max. 350 °C  
 Viscosity : Max. 400 Pa·s (Max. 4,000 Poise)  
 Speed : 5 ~ 40 min<sup>-1</sup>  
 Standard material : High speed tool steel  
 Torque list :

	Bolt size	Torque	
		N·m	kgf·cm
For plates	M6	9.8 ~ 11.8	100 ~ 120
For hub	M6	9.8 ~ 11.8	100 ~ 120
For mounting	M12	68.7 ~ 94.2	700 ~ 960

## STRUCTURE DIMENSIONS (mm)



Model	Capacity (cm <sup>3</sup> )	Diff. Press.		A	B	Mass (kg)
		MPa	kgf/cm <sup>2</sup>			
KH13D-0.3	0.3×12	19.6	200	82.9	122.9	8.4
KH13D-0.6	0.6×12	19.6	200	90.8	130.8	9
KH13D-0.8	0.8×12	19.6	200	82.1	122.1	8.4
KH13D-1.0	1.0×12	19.6	200	83.8	123.8	8.5
KH13D-1.2	1.2×12	19.6	200	85.6	125.6	8.6
KH13D-2	2.0×12	19.6	200	92.6	132.6	9.2

### Parts List

Parts No.	Name	Q'ty/set
01	Front plate	1
02	Gear casing	1
03	Gear casing	1
04	Back plate	1
05	Middle plate	1
06	Wear plate	1
07	Bushing	1
08	Bushing	2
09	Arbor	1
10	Stud	6
11	Driving gear	2
12	Driven gear	12
13	Key	2
14	Dowel	2
15	Hub	1
16	Coupler	1
17	Hub top	1
18	Plate screw	12
19	Hub screw	6