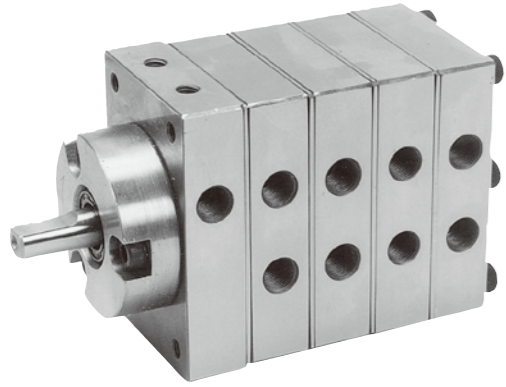


KWTD/KWT1D/KWT2D/



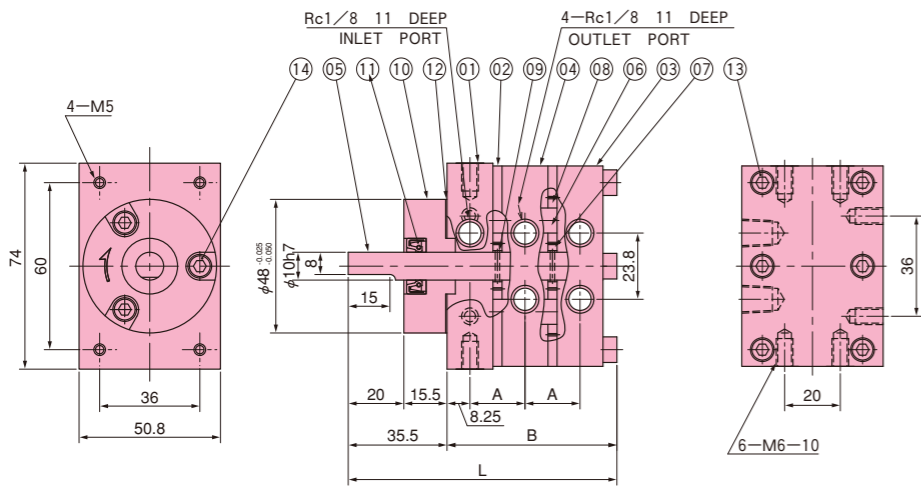
Main application : Spin-finish
 Number of ports : Inlet 1 ;
 Outlet

Model	KWTD	KWT1D	KWT2D	KWT3D	KWT4D
Number of ports	4	6	8	12	16

Displacement / port : 0.02 ~ 0.3 cm³
 Inlet pressure : 0 MPa~0.05 MPa (0 kgf/cm² ~ 0.5 kgf/cm²)
 Outlet pressure : Max. 0.05 MPa (Max. 0.5 kgf/cm²)
 Differential pressure : Max. 0.02 MPa (Max. 0.2 kgf/cm²)
 Temperature : Max. 50 °C
 Viscosity : Max. 50 mPa·s (Max. 50 C. Poise)
 Speed : 10 ~ 60 min⁻¹
 Standard material : Stainless steel
 Torque list :

	Bolt size	Torque	
		N·m	kgf·cm
For plates	M5	4.9~5.9	50~60
For hub	M5	4.9~5.9	50~60

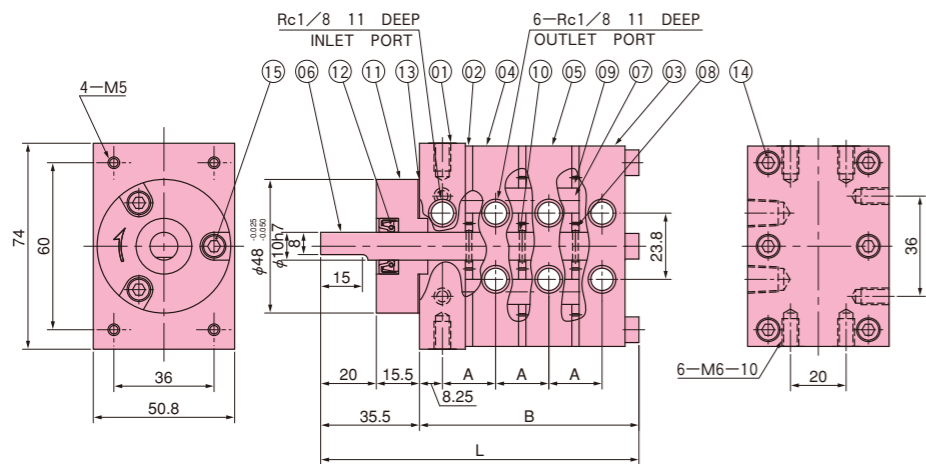
STRUCTURE DIMENSIONS (mm)



Parts List

Parts No.	Name	Q'ty/set
01	Front plate	1
02	Gear casing	2
03	Back plate	1
04	Middle plate	1
05	Arbor	1
06	Stud	2
07	Driving gear	2
08	Driven gear	4
09	Key	2
10	Seal housing	1
11	Oil seal	1
12	Gasket	1
13	Plate screw	6
14	Hub screw	3

Model	Capacity (cm ³)	A	B	L	Mass (kg)	Model	Capacity (cm ³)	A	B	L	Mass (kg)
KWTD-0.02	0.02×4	17.8	57.1	92.6	1.5	KWTD-0.15	0.15×4	19.8	61.1	96.6	1.7
KWTD-0.06	0.06×4	17.8	57.1	92.6	1.5	KWTD-0.2	0.2×4	20.9	63.3	98.8	1.7
KWTD-0.1	0.1×4	18.7	58.9	94.4	1.6	KWTD-0.3	0.3×4	20.2	61.9	97.4	1.7

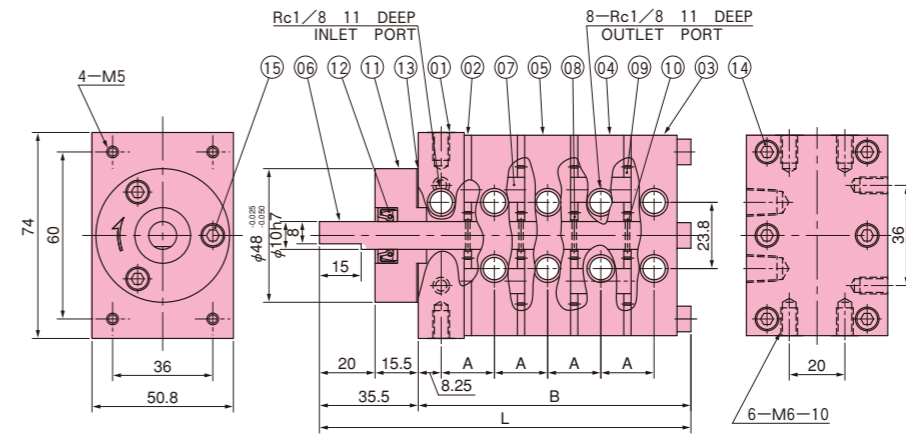


Parts List

Parts No.	Name	Q'ty/set
01	Front plate	1
02	Gear casing	3
03	Back plate	1
04	Middle plate	1
05	Middle plate	1
06	Arbor	1
07	Stud	2
08	Driving gear	3
09	Driven gear	6
10	Key	3
11	Seal housing	1
12	Oil seal	1
13	Gasket	1
14	Plate screw	6
15	Hub screw	3

Model	Capacity (cm ³)	A	B	L	Mass (kg)	Model	Capacity (cm ³)	A	B	L	Mass (kg)
KWT1D-0.02	0.02×6	17.8	74.9	110.4	2	KWT1D-0.15	0.15×6	19.8	80.9	116.4	2.2
KWT1D-0.06	0.06×6	17.8	74.9	110.4	2	KWT1D-0.2	0.2×6	20.9	84.2	119.7	2.3
KWT1D-0.1	0.1×6	18.7	77.6	113.1	2.1	KWT1D-0.3	0.3×6	20.2	82.1	117.6	2.3

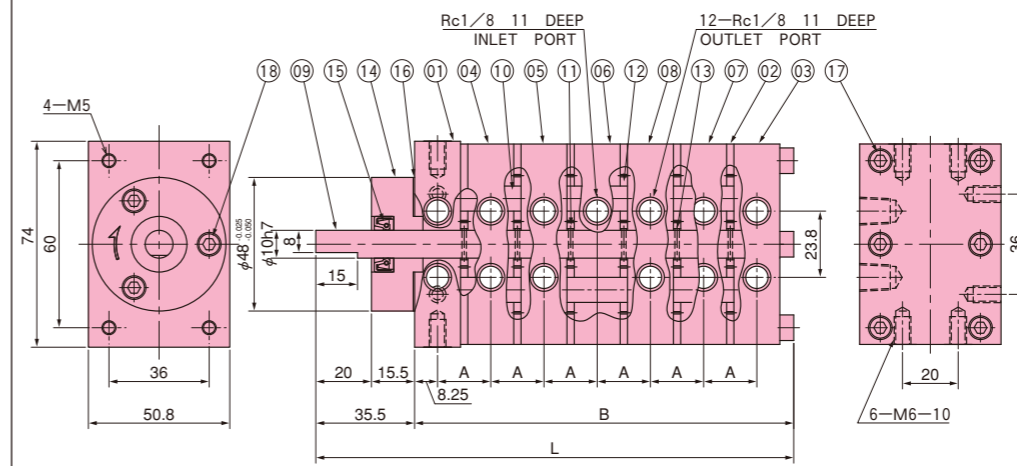
KWT3D/KWT4D SERIES



Model	Capacity (cm ³)	A	B	L	Mass (kg)	Model	Capacity (cm ³)	A	B	L	Mass (kg)
KWT2D-0.02	0.02×8	17.8	92.7	128.2	2.6	KWT2D-0.15	0.15×8	19.8	100.7	136.2	2.8
KWT2D-0.06	0.06×8	17.8	92.7	128.2	2.6	KWT2D-0.2	0.2×8	20.9	105.1	140.6	3
KWT2D-0.1	0.1×8	18.7	96.3	131.8	2.7	KWT2D-0.3	0.3×8	20.2	102.3	137.8	2.9

Parts List

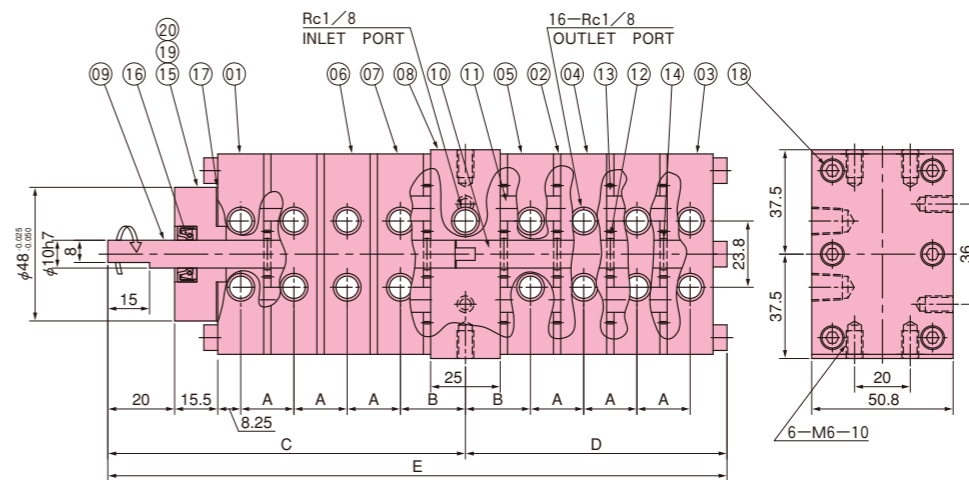
Parts No.	Name	Q'ty/set
01	Front plate	1
02	Gear casing	4
03	Back plate	1
04	Middle plate	2
05	Middle plate	1
06	Arbor	1
07	Stud	4
08	Driving gear	4
09	Driven gear	8
10	Key	4
11	Seal housing	1
12	Oil seal	1
13	Gasket	1
14	Plate screw	6
15	Hub screw	3



Model	Capacity (cm ³)	A	B	L	Mass (kg)	Model	Capacity (cm ³)	A	B	L	Mass (kg)
KWT3D-0.02	0.02×12	17.8	128.2	163.8	3.6	KWT3D-0.15	0.15×12	19.8	140.3	175.8	4.0
KWT3D-0.06	0.06×12	17.8	128.3	163.8	3.6	KWT3D-0.2	0.2×12	20.9	146.9	182.4	4.2
KWT3D-0.1	0.1×12	18.7	133.7	169.2	3.8	KWT3D-0.3	0.3×12	20.2	142.7	178.2	4.1

Parts List

Parts No.	Name	Q'ty/set
01	Front plate	1
02	Gear casing	6
03	Back plate	1
04	Middle plate	1
05	Middle plate	1
06	Middle plate	1
07	Middle plate	1
08	Middle plate	1
09	Arbor	1
10	Stud	6
11	Driving gear	6
12	Driven gear	12
13	Key	6
14	Seal housing	1
15	Oil seal	1
16	Gasket	1
17	Plate screw	6
18	Hub screw	3



Model	Capacity (cm ³)	A	B	C	D	E	Mass (kg)
KWT4D-0.02	0.02×16	17.8	22.1	119.25	88.75	208	5
KWT4D-0.06	0.06×16	17.8	22.1	119.25	88.75	208	5
KWT4D-0.1	0.1×16	18.7	22.9	122.75	92.25	215	5.2
KWT4D-0.15	0.15×16	19.8	24	127.15	96.65	223.8	5.4
KWT4D-0.2	0.2×16	20.9	25.1	131.55	101.05	232.6	5.7
KWT4D-0.3	0.3×16	20.2	24.4	128.75	98.25	227	5.5

Parts List

Parts No.	Name	Q'ty/set
01	Front plate	1
02	Gear casing	8
03	Back plate	1
04	Middle plate	1
05	Middle plate	2
06	Middle plate	1
07	Middle plate	2
08	Wear plate	1
09	Arbor	1
10	Arbor	1
11	Stud	8
12	Driving gear	8
13	Driven gear	16
14	Key	8
15	Seal housing	1
16	Oil seal	1
17	Gasket	1
18	Plate screw	11
19	Plate screw	1
20	Hub screw	2