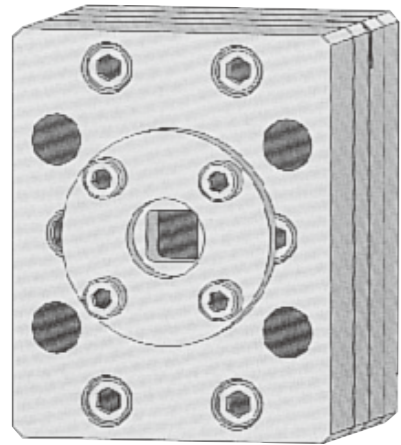


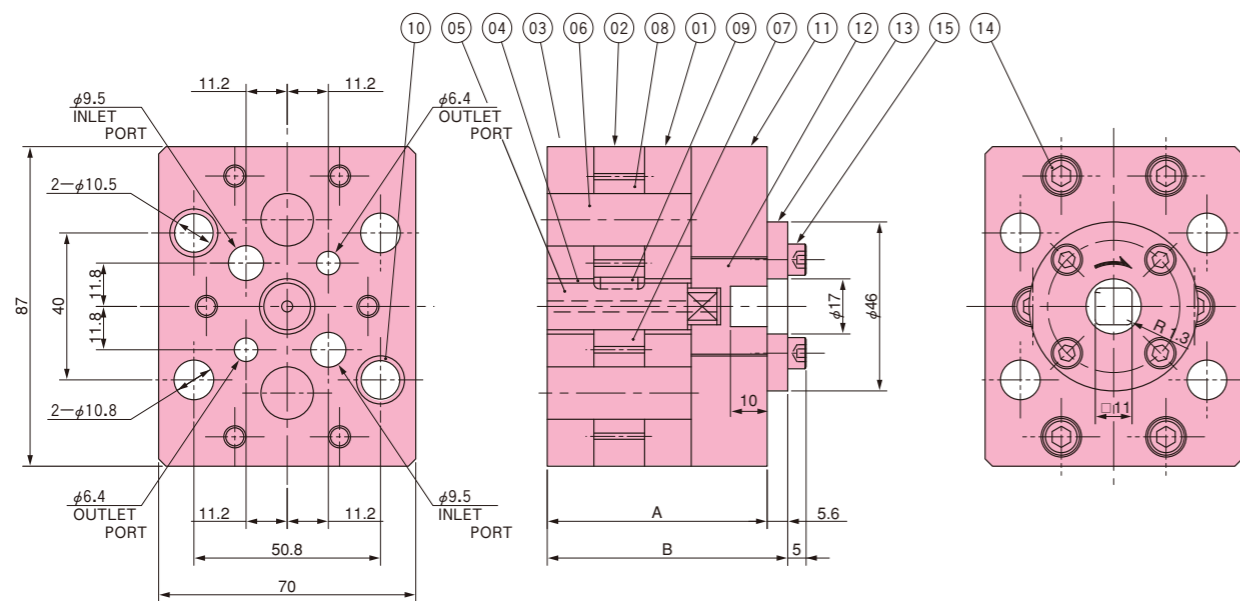
# KH3 SERIES



Main application : Melt spinning  
 Number of ports : Inlet 2 ; Outlet 2  
 Displacement / port : 0.3 ~ 3 cm<sup>3</sup>  
 Inlet pressure : 0.5 MPa~19.6 MPa (5 kgf/cm<sup>2</sup> ~ 200 kgf/cm<sup>2</sup>)  
 Outlet pressure : Max. 39.2 MPa (Max. 400 kgf/cm<sup>2</sup>)  
 Differential pressure : Please refer to table as shown below.  
 Temperature : Max. 350 °C  
 Viscosity : Max. 400 Pa·s (Max. 4,000 Poise)  
 Speed : 10 ~ 40 min<sup>-1</sup>  
 Standard material : High speed tool steel  
 Torque list :

	Bolt size	Torque	
		N·m	kgf·cm
For plates	M6	9.8~11.8	100~120
For hub	M5	4.9~5.9	50~60
For mounting	M10	49.1~53.9	500~550

## STRUCTURE DIMENSIONS (mm)

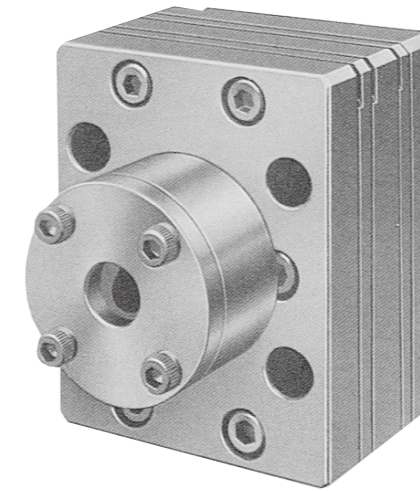


Model	Capacity (cm <sup>3</sup> )	Diff. Press.		A	B	Mass (kg)
		MPa	kgf/cm <sup>2</sup>			
KH3-0.3	0.3×2	29.4	300	49.8	55.4	2.4
KH3-0.6	0.6×2	29.4	300	51.2	56.8	2.5
KH3-1.2	1.2×2	29.4	300	56.4	62	2.7
KH3-2.4	2.4×2	29.4	300	59.7	65.3	2.9
KH3-3	3.0×2	29.4	300	63.2	68.8	3.1

### Parts List

Parts No.	Name	Q'ty/set
01	Front plate	1
02	Gear casing	1
03	Back plate	1
04	Bushing	2
05	Arbor	1
06	Stud	2
07	Driving gear	1
08	Driven gear	2
09	Key	1
10	Dowel	2
11	Hub	1
12	Coupler	1
13	Hub top	1
14	Plate screw	6
15	Hub screw	4

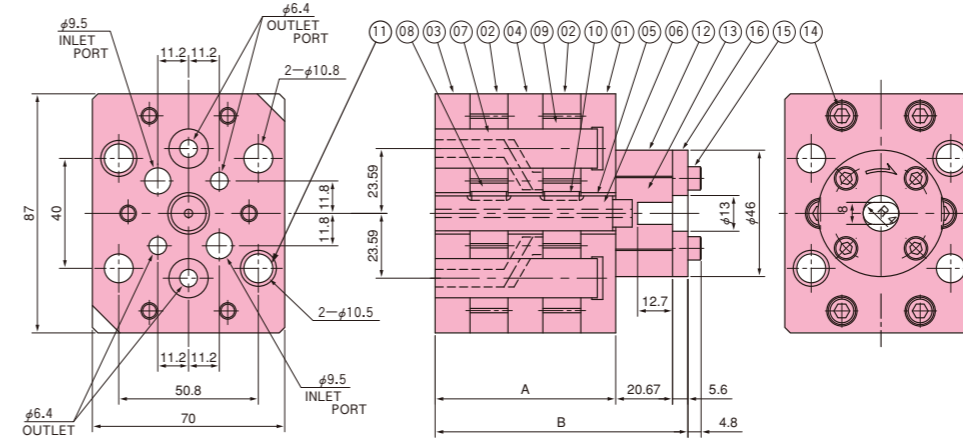
# KHP-3D/KH3D SERIES



Main application : Melt spinning  
 Number of ports : Inlet 2 ; Outlet 4  
 Displacement / port : 0.15 ~ 3 cm<sup>3</sup>  
 Inlet pressure : 0.5 MPa~19.6 MPa (5 kgf/cm<sup>2</sup> ~ 200 kgf/cm<sup>2</sup>)  
 Outlet pressure : Max. 39.2 MPa (Max. 400 kgf/cm<sup>2</sup>)  
 Differential pressure : Please refer to table as shown below.  
 Temperature : Max. 350 °C  
 Viscosity : Max. 400 Pa·s (Max. 4,000 Poise)  
 Speed : 10 ~ 40 min<sup>-1</sup>  
 Standard material : High speed tool steel  
 Torque list :

	Bolt size	Torque	
		N·m	kgf·cm
For plates	M6	9.8~11.8	100~120
For hub	M5	4.9~5.9	50~60
For mounting	M10	49.1~53.9	500~550

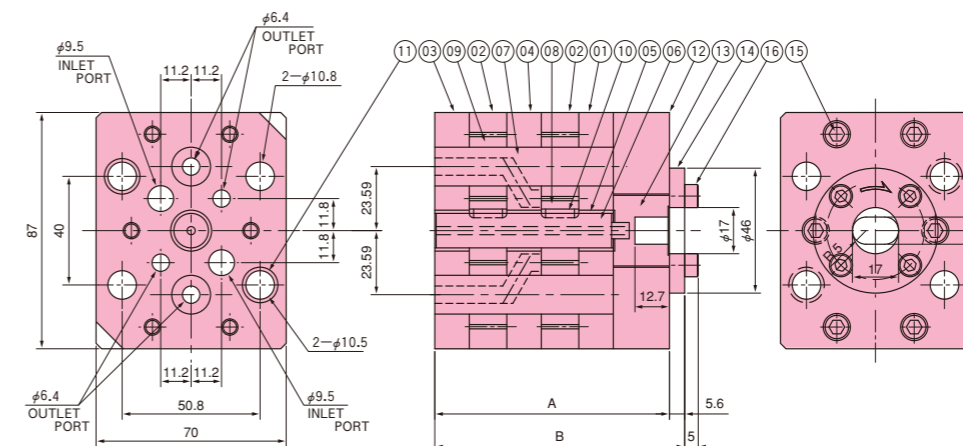
## STRUCTURE DIMENSIONS (mm)



Model	Capacity (cm <sup>3</sup> )	Diff. Press.		A	B	Mass (kg)	Model	Capacity (cm <sup>3</sup> )	Diff. Press.		A	B	Mass (kg)
		MPa	kgf/cm <sup>2</sup>						MPa	kgf/cm <sup>2</sup>			
KHP-3D-0.15	0.15×4	19.6	200	41.9	68.17	2.4	KHP-3D-1.6	1.6×4	19.6	200	65.7	91.97	3.5
KHP-3D-0.3	0.3×4	19.6	200	45.6	71.87	2.6	KHP-3D-2.4	2.4×4	14.7	150	65.5	91.77	3.5
KHP-3D-0.6	0.6×4	19.6	200	48.5	74.77	2.7	KHP-3D-3.0	3.0×4	9.8	100	72.3	98.57	3.9
KHP-3D-1.2	1.2×4	19.6	200	58.8	85.07	3.2							

### Parts List

Parts No.	Name	Q'ty/set
01	Front plate	1
02	Gear casing	2
03	Back plate	1
04	Middle plate	1
05	Bushing	3
06	Arbor	1
07	Stud	2
08	Driving gear	2
09	Driven gear	4
10	Key	2
11	Dowel	2
12	Hub	1
13	Coupler	1
14	Plate screw	6
15	Hub screw	4
16	Hub top	1



Model	Capacity (cm <sup>3</sup> )	Diff. Press.		A	B	Mass (kg)	Model	Capacity (cm <sup>3</sup> )	Diff. Press.		A	B	Mass (kg)
		MPa	kgf/cm <sup>2</sup>						MPa	kgf/cm <sup>2</sup>			
KH3D-0.3	0.3×4	29.4	300	66.2	71.8	3.2	KH3D-1.6	1.6×4	29.4	300	86.4	92	4.2
KH3D-0.6	0.6×4	29.4	300	69.1	74.7	3.4	KH3D-2.4	2.4×4	24.5	250	90.7	96.3	4.4
KH3D-1.2	1.2×4	29.4	300	79.5	85.1	3.9	KH3D-3.0	3.0×4	24.5	250	97.7	103.3	4.8

### Parts List

Parts No.	Name	Q'ty/set
01	Front plate	1
02	Gear casing	2
03	Back plate	1
04	Middle plate	1
05	Bushing	3
06	Arbor	1
07	Stud	2
08	Driving gear	2
09	Driven gear	4
10	Key	2
11	Dowel	2
12	Hub	1
13	Coupler	1
14	Hub top	1
15	Plate screw	6
16	Hub screw	4